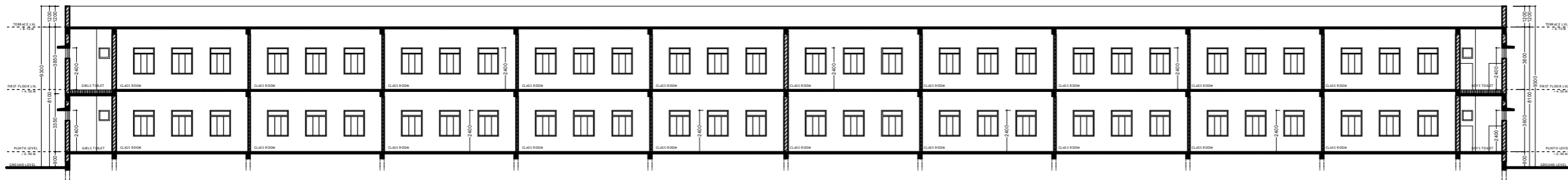
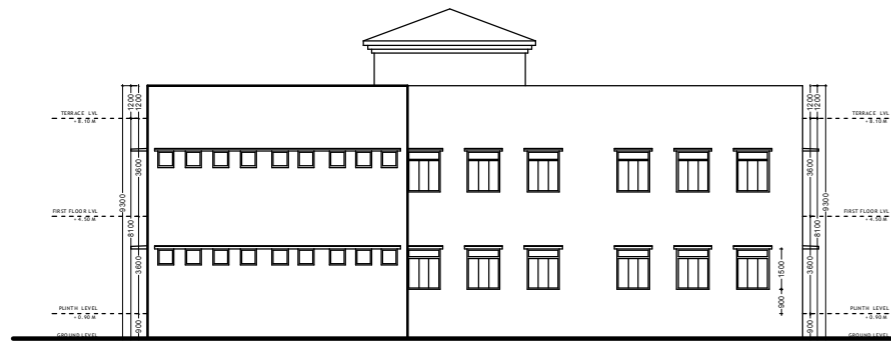


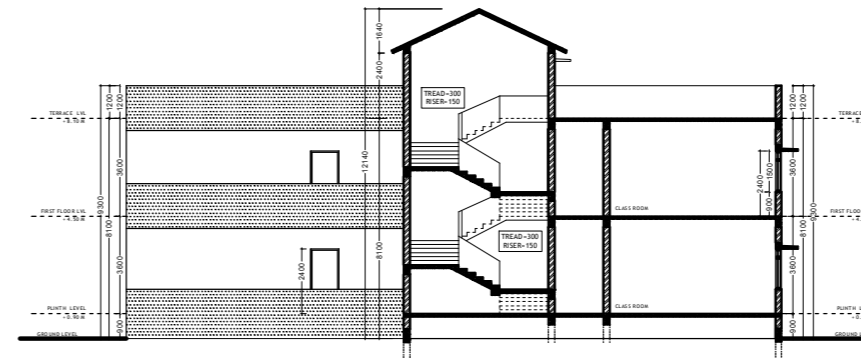
FRONT ELEVATION  
SCALE - 1:100



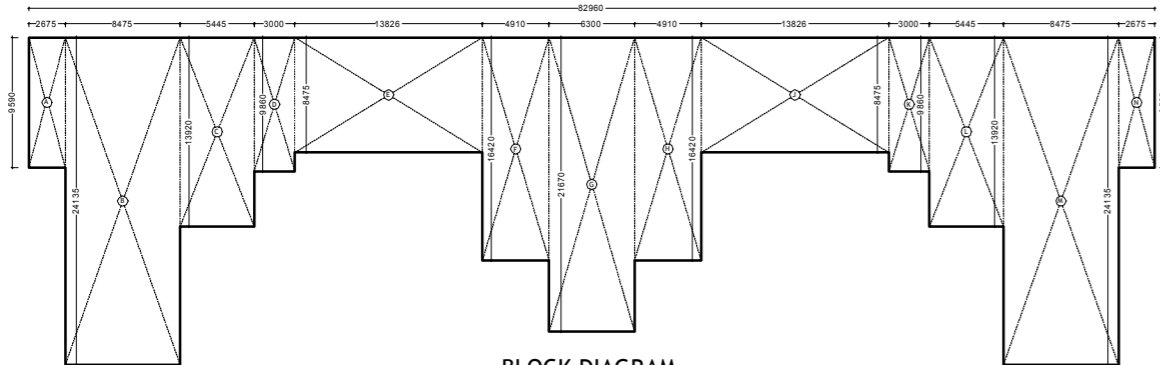
SECTION X-X  
SCALE - 1:100



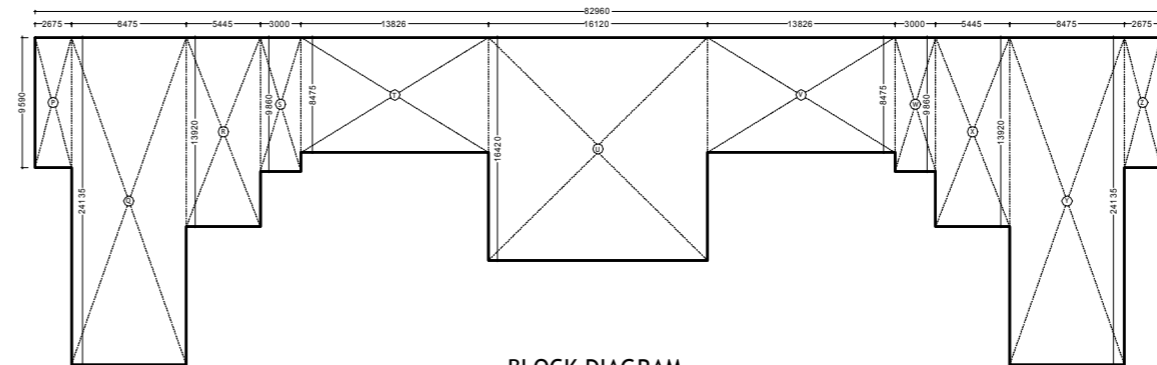
SIDE ELEVATION  
SCALE - 1:100



SECTION Y-Y  
SCALE - 1:100



BLOCK DIAGRAM  
GROUND FLOOR PLAN  
SCALE - 1:200



BLOCK DIAGRAM  
FIRST FLOOR PLAN  
SCALE - 1:200

AREA STATEMENT

GROUND FLOOR

- BLOCK 'A' = 2.675X9.590 = 25.653 SQ.MT.
- BLOCK 'B' = 8.475X24.135 = 204.544 SQ.MT.
- BLOCK 'C' = 5.445X13.920 = 75.794 SQ.MT.
- BLOCK 'D' = 3.000X9.860 = 29.580 SQ.MT.
- BLOCK 'E' = 13.825X8.475 = 117.167 SQ.MT.
- BLOCK 'F' = 4.910X16.420 = 80.622 SQ.MT.
- BLOCK 'G' = 6.300X21.670 = 136.521 SQ.MT.
- BLOCK 'H' = 4.910X16.420 = 80.622 SQ.MT.
- BLOCK 'J' = 13.825X8.475 = 117.167 SQ.MT.
- BLOCK 'K' = 3.000X9.860 = 29.580 SQ.MT.
- BLOCK 'L' = 5.445X13.920 = 75.794 SQ.MT.
- BLOCK 'M' = 8.475X24.135 = 204.544 SQ.MT.
- BLOCK 'N' = 2.675X9.590 = 25.653 SQ.MT.

TOTAL GROUND FLOOR B/U AREA  
= A + B + C + D + E + F + G + H + J + K + L + M + N  
= 25.653 + 204.544 + 75.794 + 29.580 + 117.167  
+ 80.622 + 136.521 + 80.622 + 117.167  
+ 29.580 + 75.794 + 204.544 + 25.653  
= 1203.241 SQ.MT.

FIRST FLOOR

- BLOCK 'P' = 2.675X9.590 = 25.653 SQ.MT.
- BLOCK 'Q' = 8.475X24.135 = 204.544 SQ.MT.
- BLOCK 'R' = 5.445X13.920 = 75.794 SQ.MT.
- BLOCK 'S' = 3.000X9.860 = 29.580 SQ.MT.
- BLOCK 'T' = 13.825X8.475 = 117.167 SQ.MT.
- BLOCK 'U' = 16.120X16.420 = 264.690 SQ.MT.
- BLOCK 'V' = 13.825X8.475 = 117.167 SQ.MT.
- BLOCK 'W' = 3.000X9.860 = 29.580 SQ.MT.
- BLOCK 'X' = 5.445X13.920 = 75.794 SQ.MT.
- BLOCK 'Y' = 8.475X24.135 = 204.544 SQ.MT.
- BLOCK 'Z' = 2.675X9.590 = 25.653 SQ.MT.

TOTAL FIRST FLOOR B/U AREA  
= P + Q + R + S + T + U + V + W + X + Y + Z  
= 25.653 + 204.544 + 75.794 + 29.580 + 117.167  
+ 264.690 + 117.167 + 29.580  
+ 75.794 + 204.544 + 25.653  
= 1170.166 SQ.MT.

NET TOTAL B/U AREA  
= GROUND FLR. B/U AREA + FIRST FLR. B/U AREA  
= 1203.241 SQ.MT. + 1170.166 SQ.MT.  
= 2373.407 SQ.MT.

SCHEDULE OF OPENINGS

DOORS		
D1	1.05X2.40	FLUSH DOOR
D2	0.90X2.40	FLUSH DOOR
D3	0.75X2.40	FLUSH DOOR

WINDOWS		
W1	1.20X1.10	M.S. GRILL WINDOW
W2	0.90X2.10	M.S. GRILL WINDOW

VENTILATORS		
V1	0.60X0.60	M.S. VENTILATOR